



TerminEdge™ & TerminEdge AR for Single-Ply.

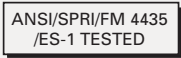
PRODUCT DATA SPECIFICATIONS

PRODUCT DESCRIPTION

OMG's three-piece snap-on fascia for single-ply applications. TerminEdge and TerminEdge AR Fascia provide superior protection from wind and water penetration.

FEATURES & BENEFITS

- Retainers are self-locating with pre-punched slots to accommodate thermal expansion and contraction and reduce installation time.
- TerminEdge includes 20 gauge galvanized steel retainers; TerminEdge AR comes with .050-in. extruded aluminum retainers for extra strength.
- ANSI/SPRI/FM-4435 ES-1 Tested and FM Approved.
- Warranted in wind conditions up to 155 mph with a 25-year, Category 5 Wind Warranty.

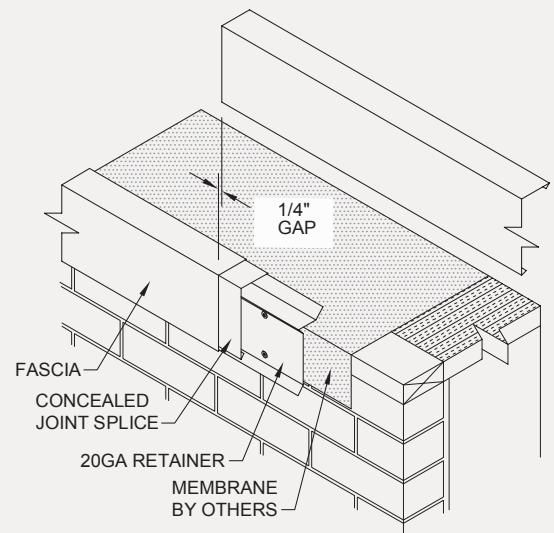
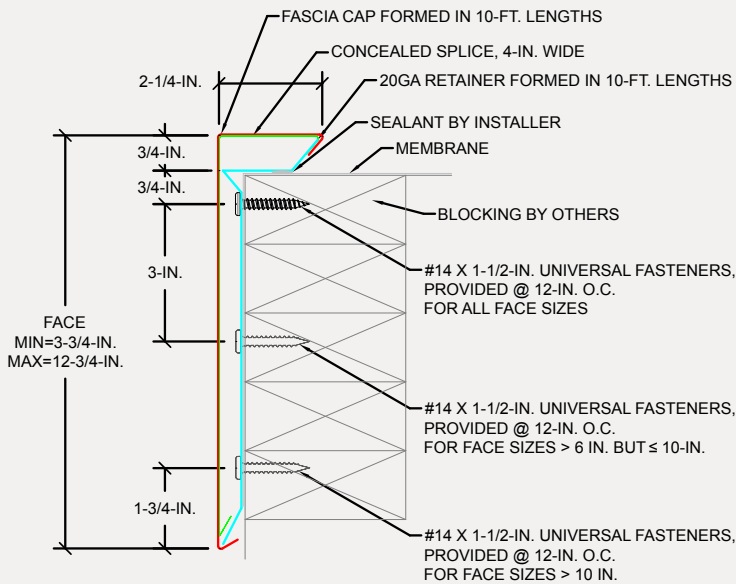


SIZES AND MATERIALS

For convenience and to ensure that a TerminEdge product is available for your specific application, all TerminEdge products are made to order.

- Sizes range from 3.75- to 12.75-inches.
- All sizes are available in several options including:
 - 24 and 22 Ga Kynar 500-coated galvanized steel
 - .040-, .050- and .063-inch aluminum
 - 24 and 22 Ga stainless steel
- In addition, all TerminEdge products are available in a wide variety of standard colors and finishes as well as custom colors to match your specific requirements.

ANSI/SPRI/FM4435/ES-1 TEST PRESSURES UP TO 381 PSF (HORIZONTAL)



PRE-DRILL WITH 3/16-IN. DRILL BIT FOR MASONRY CONDITIONS.

CONTACT US FOR APPROPRIATE RECOMMENDATIONS NEEDED TO MEET/EXCEED ANSI/SPRI/FM4435/ES-1 DESIGN CRITERIA



TerminEdge™ & TerminEdge AR for Single-Ply.

INSTALLATION

SPECIFICATIONS (short form)

TerminEdge fascia is a low profile roof edge for fully adhered or mechanically attached single-ply roof membranes.

TerminEdge fascia cap shall be formed metal with a galvanized steel retainer.

TerminEdge AR fascia is a low profile roof edge for fully adhered or mechanically attached single-ply roof membranes. The fascia cap shall be formed metal with a .050 aluminum retainer.

TerminEdge fascia and retainers will be supplied in 10-ft. (3.04 m) lengths.

DESCRIPTION

TerminEdge is a three-part assembly with a rigid formed retainer, decorative snap-on fascia cover, and matching splice plates for single-ply roofs.

The fascia cap is available in 24 and 22 Ga Kynar 500® coated galvanized steel, .040-in. (1 mm), .050-in. (1.25 mm) and .063-in. (1.60 mm) aluminum, and 24 and 22 Ga stainless steel. Retainer will be 20 gauge galvanized steel or .050 aluminum with self-locating, pre-punched, slotted holes for fasteners at 12-in. (304.8 mm) on center and supplied in standard 10-ft. (3.04 m) lengths.

INSTALLATION PROCEDURES

This is a general outline. Refer to our full installation guide for details.

Preparation:

The roof edge must be level and wood nailers must be straight. Install the roofing membrane according to the roofing membrane manufacturer's instructions. The edge of the membrane should extend over the face of the building approximately 1-in. (25.4 mm) and be secured by the retainer section or as required by the

membrane manufacturer. Before the retainer is installed, apply a continuous bead of the roof manufacturer's sealant to the bottom side of the retainer.

Secure the retainer using OMG's #14 Universal Fasteners (for wood, metal and masonry). Locate the fasteners in the pre-punched, slotted holes. Unless otherwise specified, fasteners should be located every 12-in. (304.8 mm) on center.

Install concealed joint splices between each fascia section. Hook the joint splice from the top and allow it to hang down and rest on the face of the retainer. **Do not hook the splice plate under the retainer.** Install fascia by hooking the back flange over the top of the retainer. Snap the fascia on by pushing down firmly on the leading edge until bottom snaps over the drip edge of the retainer. Leave a 1/4-in. gap at each joint for thermal movement.

Coordinate with membrane manufacturer before starting installation.

FINISHES

- Mill aluminum
- Pre-Finished Kynar 500 from the manufacturer's standard color chart
- Premium pre-finished Kynar 500 from the manufacturer's color chart
- Post-Finished Kynar 500
- Pre-Finished anodized aluminum – clear, bronze or black
- Post-Finished anodized aluminum

Custom colors are also available. Contact OMG EdgeSystems for details.

GUARANTEE

A. Manufacturer's Limited Warranty: Warranted materials shall be free of defects in material and workmanship for five years after shipment. If, after inspection, the manufacturer agrees that materials are defective, the manufacturer shall at their option repair or replace them.

B. 25-Year Category 5 Warranty: Manufacturer shall guarantee that the edge system, when installed per manufacturer's instructions, will not blow off, leak, or cause membrane failure, even in wind conditions up to 155 mph, or the manufacturer shall replace or repair its materials.



C. Decorative Finish Warranty

- 30 year, pre-finished Kynar 500 warranty
- 20 year, pre-finished Kynar 500 warranty

QUALITY ASSURANCE

The fascia product shall be listed in the current Factory Mutual Research Corporation Approval Guide tested per ANSI/SPRI/FM 4435/ES-1 Test Method RE-2 Pull-Off test for fascia. Fascia shall be certified by the manufacturer to design pressures as indicated in current edition of Wind Resistance Standard for Edge Systems Used with Low Slope Roofing Systems.

TECHNICAL SERVICES

Shop drawings are available from the factory. Product samples, detail sheets, color chips and color charts are ready for your submittal package. Long form specifications and CAD details are available on our website. For personal assistance with questions or submittals, contact your local OMG representative.



4 COMMERCE WAY, ARDEN NC 28704 USA
800-892-9173 828-676-1700 OMGROOFING.COM

Copyright © 2020 OMG, Inc. All rights reserved.

Superior productivity.
Superior performance.

